

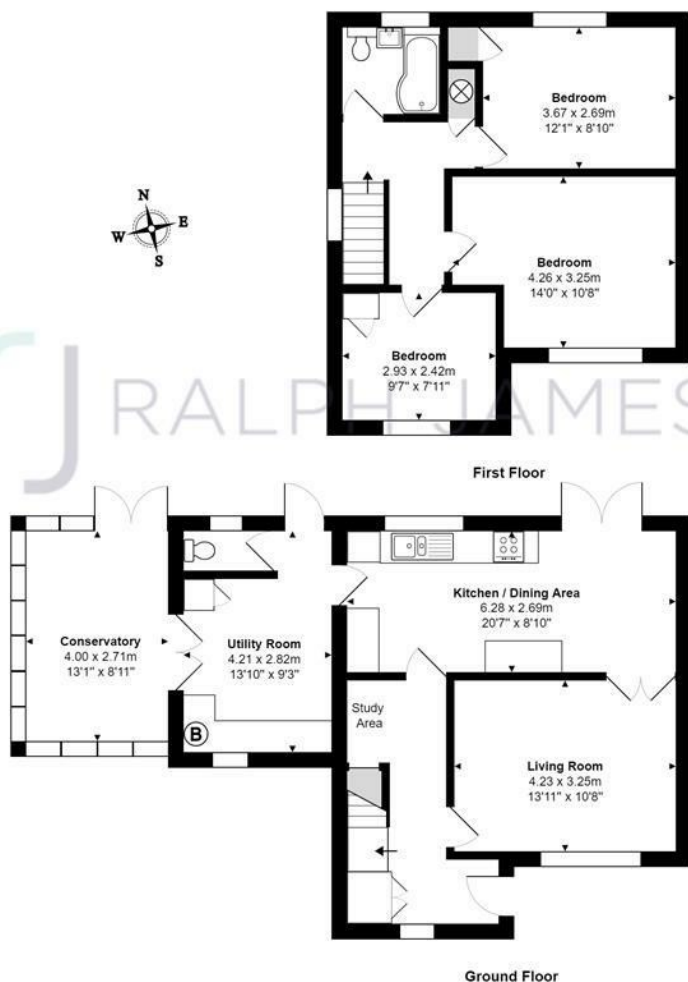
Hazel Close Reigate Surrey

£500,000



RALPH JAMES

FLOOR PLANS



Hazel Close, Reigate
 Total Area: 110.3 m² ... 1188 ft²
 FOR ILLUSTRATIVE PURPOSES ONLY.

Whilst every attempt has been made to ensure the accuracy of the floor plan shown, all measurements, positioning, fixtures, features, fittings and any other data shown are an approximate interpretation for illustrative purposes only and are not to scale.

No responsibility is taken for any error, omission, miss-statement or use of data shown.

The above statement applies to both 'Still Moving London LTD' and the Company or individual displaying this floor plan.

Unauthorised reproduction prohibited.

© Still Moving London LTD (www.stillmoving.london)



IN A NUTSHELL



Short walk to Priory Walk



2 receptions rooms



Kitchen/Diner



3 bedrooms



1 bathrooms



Driveway parking for 3 cars



WHAT'S GREAT?

Neatly tucked away down a quiet close, this home is flowing with light throughout with spacious rooms giving it an even more open feel. Heading inside, you have cupboards straight ahead for jackets and shoes. To your right you step through to the large living room.

Comfortably fitting in a large sofa, you can curl up with a cup of something hot along with a sweet treat as you catch up the latest TV series or enjoy a movie night in with the children. The large window let in the sunshine whilst the shrubs outside provide privacy.

Double doors take you into the open plan kitchen/dining area where the country style kitchen provides you with a generous amount of cupboard space with it's pretty rustic finish. White cupboards line opposite sides of the wall with plenty of countertop space for you to create some delicious meals and play around with new recipes. The utility room offers you a place to keep unnecessary white goods away from the main kitchen, its own butler sink, W/C and provides access through to the conservatory and the beautiful garden.

Outside you have an easy to maintain garden with complete privacy. The patio runs around the house which gives you a place for the BBQ during summer parties and a place to sit when dining alfresco on a warm evening. You can sunbath on the lawn whilst the children play and the planted flowers add a burst of colour to create a delightful haven.

Upstairs there are three bedrooms, all of which are a great size, there are two doubles and one single. Two of the bedrooms have built in cupboards and the back bedroom shows pretty views of the garden. The family bathroom has a large P shaped tub with overhead shower.

Just a short walk away you have Priory Park as well as a the local shops in case you need to grab the essentials. Reigate High Street is over the hill and great for a spot of shopping or dinner out, you can catch up with friends at one of the local coffee shops or grab a bite at the local pubs.





Thomas likes it
because....

"This is a great home for those looking for some additional space, you have some excellent schools within walking distance and Earlswood Lakes is just down the road providing a delightful spot to have a picnic and grab an ice-cream."

SELLER'S SECRET

Coming soon...

CLOSE TO HOME

enter text here

To buy or not to buy...



RALPH JAMES



39 High Street | Redhill | RH1 1RX | 01737 765555
admin@ralphjames.co.uk | www.ralphjames.co.uk